

Factsheet

Yonki Tod Civils Check

Resources

Project Title

Yonki Tod Civils Check

Location

Eastern Highlands, PNG

Client

PNG Power Limited

Project Type

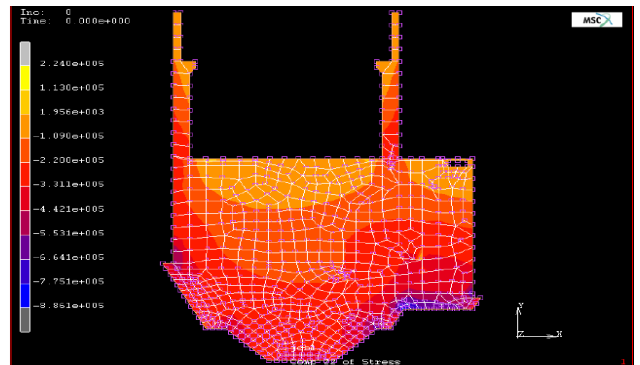
Embankment Dam

Total Capacity

18MW

Intake Flow Rate

50m³/s



Project Description

Kramer Ausenco was commissioned to review the technical reports & drawings for the Yonki Toe of Dam hydro power plant and provide recommendations. We reviewed the Foundation Stress, Geotechnical, Air System, Oil System and Penstock reports to name a few. We also conducted reviews and provided recommendations on technical drawings for Drainage & Dewatering, Generator Frusta, Powerhouse and Machine Hall Structures. Our expertise in structural, civil and resources engineering gave us the ability to review, assess and make recommendations for our client on the technical aspects of this project.

Project Role

- Review technical design reports & drawings
- Critically assess the technical information provided in the reports & drawings
- Provide recommendations to our client