

Factsheet

Wewak Main Wharf

Maritime

Project Title

Wewak Main Wharf

Location

Wewak, East Sepik, PNG

Client

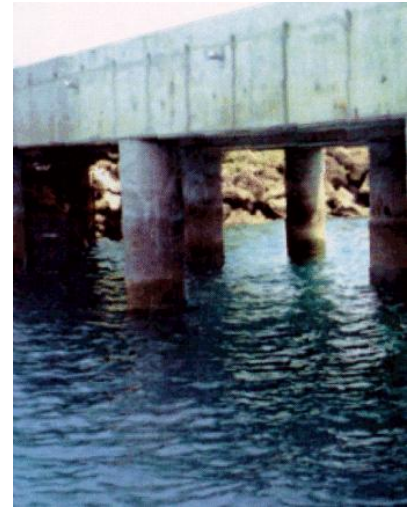
PNG Harbours Board

Project Type

Wharf

Year Completed

1995



Project Description

The project included remedial works to repair damage to the existing main wharf at Wewak. Damage to the existing wharf has occurred to deck, fender and structural system.

Project included damage assessment, structural design and documentation, construction cost estimate, contract documents preparation and supervision of construction.

Project Role

- Project Managers
- Structural Engineers
- Civil Engineers