

Factsheet

Hohola Suburb Areas Roads Upgrading

Roads & Highways

Project Title

Hohola Suburb Areas Roads Upgrading

Location

Hohola, Port Moresby, PNG

Client

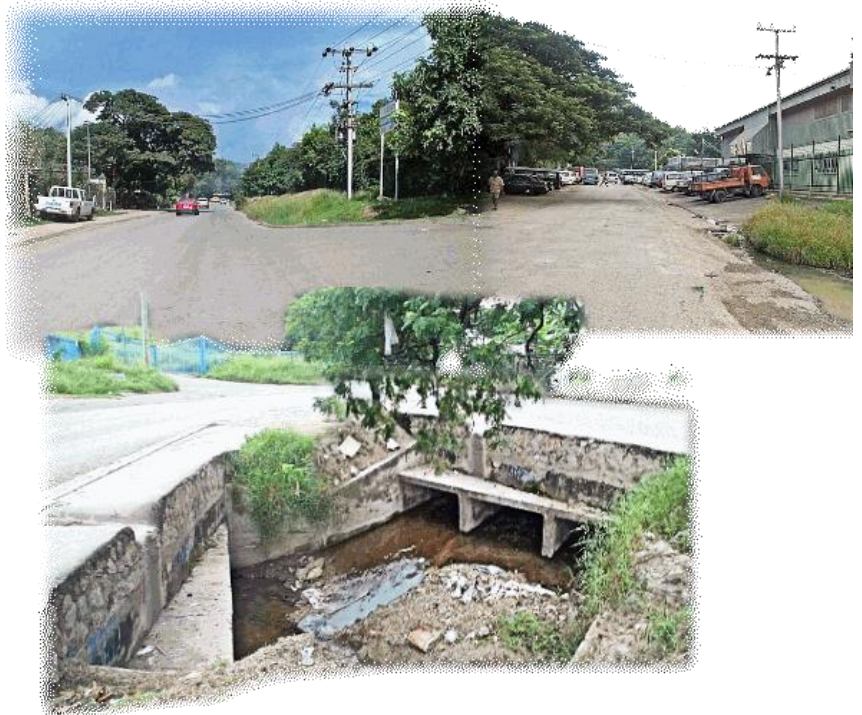
National Capital District Commission

Project Type

Upgrading of 7km Existing Roads

Year Completed

2001



Project Description

Kramer Ausenco's responsibilities included upgrading of a total of 7km of existing suburban roads with associated drainage system, infrastructure services and road furniture's/ signage.

Services include detailed design and documentation regarding preparation of engineering estimates and tender contract documentation.

Total Length

7 km

Project Role

- Project Managers
- Structural Engineers
- Civil Engineers
- Electrical Engineers