

## Factsheet

# Hiritano Highway- Laloki to Brown River

Roads & Highways

---

**Project Title**

Hiritano Highway – Laloki to Brown River

---

**Location**

Central Province, Papua New Guinea

---

**Client**

Department of Public Works

---

**Project Type**

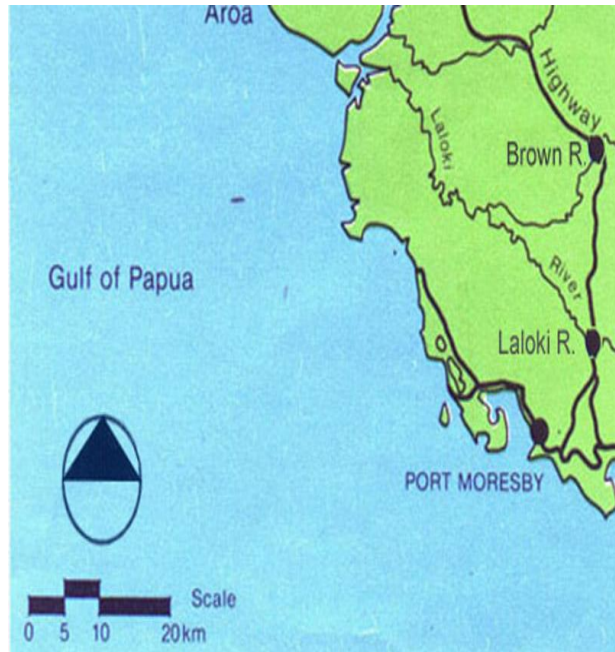
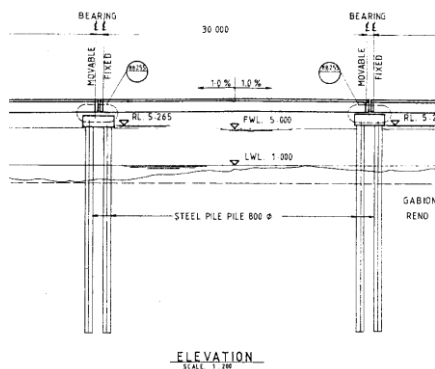
Highway

---

**Year Completed**

1981

---



### Project Description

This part of the Hiritano Highway from Laloki Bridge to Brown Rive Bridge was the first leg of main arterial road from PNG's capital of Port Moresby heading west. The scope of the works involved the re-sheeting & resealing of 22km of highway plus the widening of a single span 18m concrete deck steel girder composite bridge.

Kramer Ausenco was engaged by the GoPNG Department of Works to carry out the investigation, detailed design & documentation of the project including hydraulic calculations for all associated culvert design & selection. Pre-tender estimates were also prepared.

The consultancy also included the investigations of options for the treatment of an existing 18m single lane bridge and the ultimate detailing of the widening exercise from single

lane to a double lane structure. The assignment was completed around mid 1981.

### Total Length

22 km

### Project Role

- Structural Engineers
- Civil Engineers