

Factsheet

Bank South Pacific (BSP) Haus

Commercial, Residential and Industrial

Project Title

BSP Haus

Location

Port Moresby, PNG

Client

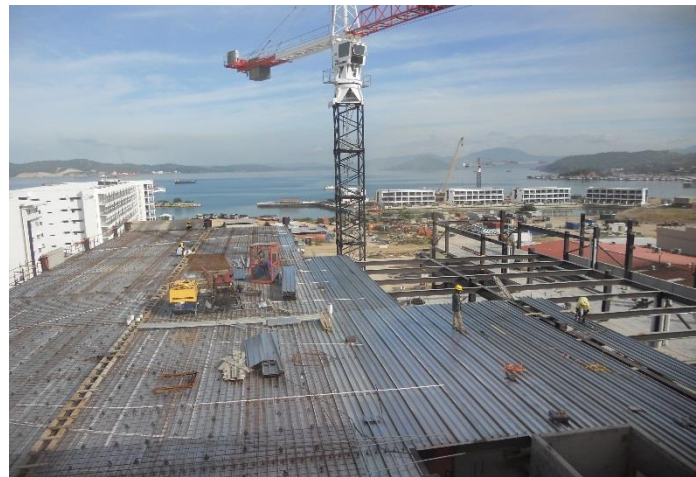
Harbour City Developments Ltd

Project Type

Commercial

Year Completed

2013



Project Description

The BSP Haus is another BSP Commercial centre located in the heart of Port Moresby's Harbour City. Kramer Ausenco was provided to this project its structural and building services expertise. Structural designs were carried out with regular inspections. A structural compliance certificate was later issued upon completion. Mechanical, electrical and hydraulic designing were also calculated and drawn. Compliance inspections were essential for report writing back to the client.

Project Role

- Structural Engineering
- Electrical Engineering
- Mechanical Engineering
- Hydraulics Services
- CAD Services